

波纹型包垫

CORRUGATED GASKET WITH PTFE ENVELOPE

苏州市协力化工设备有限公司
Suzhou Xilie Chemical Equipment Co., Ltd

6-1

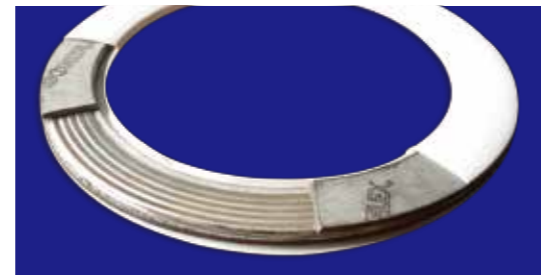
www.szxieli.com

波纹型包垫

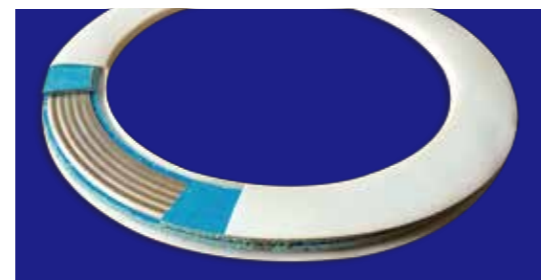
CORRUGATED GASKET WITH PTFE ENVELOPE

搪玻璃专用垫片由不锈钢波纹板、不含石棉的填充板和纯四氟包壳组成，其内填充料由国产纤维板SA3000及欧洲进口石墨橡胶板NF3000二种，其垫片型号分别为SA3000和NF3000。管口垫片的外包四氟壳，结构分Y、EC和AC型。NF3000波纹包垫适用范围按图1~3，管口垫尺寸按表1，设备垫和人孔垫尺寸按表2~3。

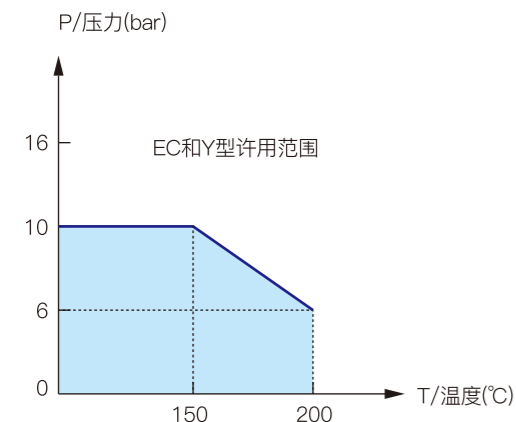
The gaskets for glass-lined equipment and pipelines is consisting of asbestos-free insert, stainless corrugated ring and pure PTFE envelope. There is two kind of inserts, The fiber plate with rubber provide by local called type SA3000, The graphite plate with rubber imported from Europe called type NF3000. The EC, Y and AC shapes are offered to envelope cover of nozzle gaskets. It has good compressibility to give safe and reliable sealing without risk to the glassed surfaces. The applicable scope of NF3000 according to graph 1 to graph 3. The table 1 show main size for nozzle gaskets, the table 2 for equipment gaskets and the table 3 for manhole gaskets.



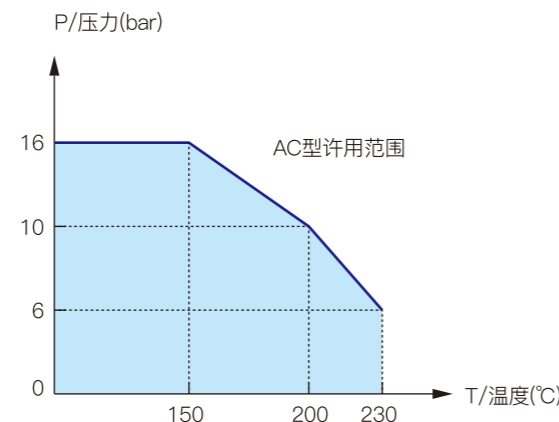
NF3000



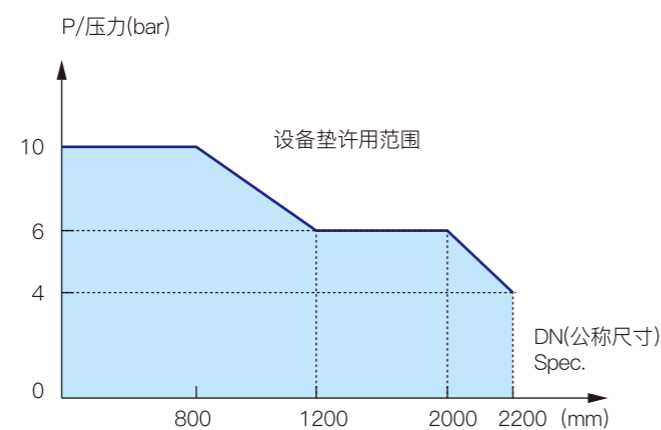
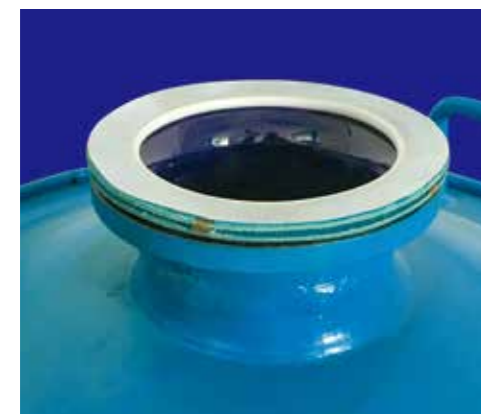
SA3000



管口垫 图/Graph 1
(Gasket For Nozzle)



管口垫 图/Graph 2
(Gasket For Nozzle)



设备垫 图/Graph 3
(Gasket For Equipment)

管口垫 Nozzle Gaskets



表1/Table 1

序 Item	规格 Spec.	尺寸 d ₀ x d ₁ x S	结构/Str.		
			Y	EC	AC
1	DN10 PN10	Φ45 x Φ15 x 4	✓	✓	✓
2	DN15 PN10	Φ50 x Φ20 x 4	✓	✓	✓
3	DN25 PN10	Φ65 x Φ28 x 4	✓	✓	✓
4	DN40 PN10	Φ85 x Φ45 x 4	✓	✓	✓
5	DN50 PN10	Φ100 x Φ55 x 8	✓	✓	✓
6	DN65 PN10	Φ120 x Φ65 x 8	✓	✓	✓
7	DN80 PN10	Φ135 x Φ85 x 8	✓	✓	✓
8	DN100 PN10	Φ155 x Φ105 x 8	✓	✓	✓
9	DN125 PN10	Φ185 x Φ130 x 8	✓	✓	✓
10	DN150 PN10	Φ210 x Φ155 x 8	✓	✓	✓
11	DN200 PN10	Φ265 x Φ205 x 8	✓	✓	✓
12	DN250 PN10	Φ315 x Φ255 x 8		✓	
13	DN300 PN10	Φ365 x Φ305 x 8		✓	
14	DN350 PN10	Φ425 x Φ355 x 8		✓	
15	DN400 PN10	Φ475 x Φ405 x 8		✓	
16	DN450 PN10	Φ530 x Φ455 x 8		✓	

(DN250-DN450 无Y型, 无AC型) 注: DN10-DN40不含波纹
Remark: The Gasket of DN10-DN40 is without SS corrugated



设备垫 Equipment Gaskets

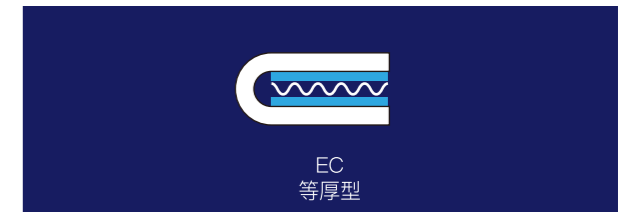


表2/Table 2

序 Item	规格 Spec.	尺寸 d ₀ x d ₁ x S	结构/Str.
			EC
1	DN400 PN6	Φ495 x Φ420 x 12	✓
2	DN500 PN6	Φ595 x Φ520 x 12	✓
3	DN600 PN6	Φ695 x Φ620 x 12	✓
4	DN700 PN6	Φ795 x Φ720 x 12	✓
5	DN800 PN6	Φ895 x Φ820 x 12	✓
6	DN900 PN6	Φ995 x Φ920 x 12	✓
7	DN1000 PN6	Φ1095 x Φ1020 x 12	✓
8	DN1100 PN6	Φ1205 x Φ1120 x 12	✓
9	DN1200 PN6	Φ1305 x Φ1220 x 12	✓
10	DN1300 PN6	Φ1415 x Φ1325 x 12	✓
11	DN1400 PN6	Φ1515 x Φ1425 x 12	✓
12	DN1450 PN6	Φ1565 x Φ1475 x 12	✓
13	DN1600 PN6	Φ1725 x Φ1625 x 12	✓
14	DN1750 PN6	Φ1875 x Φ1775 x 12	✓
15	DN1900 PN6	Φ2025 x Φ1925 x 12	✓
16	DN2000 PN6	Φ2125 x Φ2025 x 12	✓
17	DN2200 PN6	Φ2325 x Φ2225 x 12	✓

人孔垫片 Manhole Gaskets

表3/Table 3

1	DN300 x 400	Φ480 x 380/Φ420 x 320/12	✓
2	DN350 x 450	Φ530 x 430/Φ470 x 370/12	✓
3	DN450	Φ545 x Φ470/12	✓
4	DN500	Φ595 x Φ520/12	✓
5	DN600	Φ695 x Φ620/12	✓
6	500DIN	Φ605 x Φ520/12	✓
7	600DIN	Φ705 x Φ620/12	✓



苏州市协力化工设备有限公司
苏州市相城经济开发区太平工业园

SUZHOU XILIE CHEMICAL EQUIPMENT CO., LTD
Taiping Industry Park, Xiangcheng Economic Zone
Suzhou, China 215137

Tel: +86-512-65423098 65491186
Fax: +86-512-65493213 65423298

E-mail: qjfsp@163.com
www.szxieli.com